

Emergency-stop FRPVKOO

Category:	Emergency-stops
Series:	SHORTRON®
Panel cut-out:	Ø 22.3 mm
Mounting depth:	18,1 mm
Degree of protection:	IP65 / IP67
Illumination:	no
With labelling option:	no
Contact equipment:	2 NC
Connection type:	Faston terminals 2.8 x 0.8 mm
Front bezel	yellow
mushroom head	red
Storage temperature:	-40°C ... 80°C
Positive opening:	acc. to EN60947-5-1, appendix K
Operating temperature:	-25°C ... 70°C
Mechanical life:	30,000 switching cycles
Shape:	round
Electrical life:	30,000 switching cycles at rated load
Foolproof:	yes
Anti-lock collar:	no
Switching position	yes
indicator:	
Release:	pull
Contact material:	AgNi

Optional accessory



Insulated plastic enclosure, 1 mounting hole DIRL1V-R22



Insulated plastic enclosure, 1 mounting hole DIRL1VGB-R22



Insulated plastic enclosure, 2 mounting holes DIRL2V-R22



Insulated plastic enclosure, 3 mounting holes D1RL3V-R22



Insulated plastic enclosure, 3 resp. 4 mounting holes D1RL4V-R22



Faston clamp 2.8 x 0.8 mm with snap-in pin FH2,8



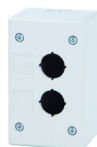
Insulating case IH2,8



Insulated plastic enclosure, 1 mounting hole IRL1M



Insulated plastic enclosure, 1 mounting hole IRL1M_GELB



Insulated plastic enclosure, 2 mounting holes IRL2M



Insulated plastic enclosure, 3 mounting holes IRL3M



Insulated plastic enclosure, 5 mounting holes IRL5M

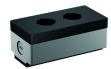
Yellow nameplate NAS_22



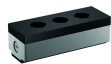
Yellow nameplate with quadrilingual imprint NAS_22_548



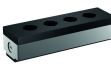
Empty enclosure with predetermined breaking point PXD1



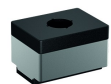
Empty enclosure with predetermined breaking point PXD2



Empty enclosure with predetermined breaking point PXD3



Empty enclosure with predetermined breaking point PXD4



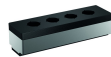
Empty enclosure PXO1



Empty enclosure PXO2



Empty enclosure PXO3



Empty enclosure PXO4



Protective shroud RRSK



Insulated plastic enclosure with 1 mounting hole SIL22/1



High insulated plastic enclosure with 1 mounting hole SILH22/1

